



TRANSMISSION



CONVEYOR SPARES



CRANE SPARES



ROLLINGMILL SPARES

Manufacturer & Stockist :

Coupling, Pulley, Sprocket, Chain, Gears, Bearing Housing



About As:

EMCO ENGINEERING, is a leading manufacturer of mechanical transmission products for the past three decades. Products include couplings, pulley, gears, sprockets, chain and so on. Apart from standard material EMCO is expertise in customised material which is consumed by the steel plants, rolling mills, cement, mining, oil & gases, packaging, pharma and chemical industries globally. Due to continuous research and innovations EMCO has earned a great level of customer satisfaction in domestic as well as overseas market.

EMCO ENGINEERING have always strived to be the leading and renowned supplier of superior quality products. All the raw materials and finished products undergo stringent quality checks at different levels thereby ensuring high durability, tensile strength and resistivity to adverse conditions. EMCO Engineering has established, implement, maintained and continually improved a quality management system, including the processes needed and their interaction, in accordance with the requirements of the international standards. EMCO Engineering has been building long term relationships with customers through a commitment to on-time and on-budget delivery of products.

Our Vision

To be a leading machinery manufacturer and supplier by offering suitable products at revolutionary price. We shall inspire our employees to be the best they can be, build top class products while engaging them in sustainable practices and anticipate the needs of our customers.

Our Mission

To provide quality products and their relative options along with efficient and proactive services to the customers, at competitive prices, so as to achieve total customer satisfaction & making sure that it creates a reliable relationship between us and our associates.



TUV NORD



ISO 9001 : 2015

TRANSMISSIONS

COUPLING



GEAR COUPLING



PIN BUSH COUPLING



STAR COUPLING



GRID SPRING COUPLING



BRAKE DRUM COUPLING



CHAIN COUPLING



NYLON GEAR COUPLING



UNIVERSAL JOINT



TYRE COUPLING



DISC COUPLING



ENCODER COUPLING

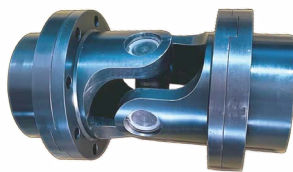


BELLOW COUPLING

CUSTOMISED COUPLING



DRUM CHAIN COUPLING



FLANGE JOINT



BUSH COUPLING

SPROCKET



SPROCKET



CONVEYOR SPROCKET

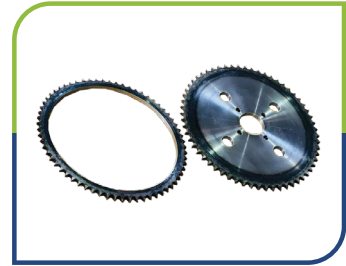


PLATE WHEEL

CHAIN



ROLLER CHAIN



CONVEYOR CHAIN



ATTACHMENT CHAIN



PIV CHAIN



ELEVATOR CHAIN



SLAT CHAIN

GEAR AND PINION



RACK & PINION



SPIRAL BEVEL GEAR



HELICAL GEAR



NYLON GEAR



WORM GEAR



GIRTH GEAR

PULLEY



TAPER LOCK PULLEY



TIMING PULLEY



WIRE ROPE PULLEY



POLY V PULLEY



SPLIT PULLEY



LOCKING ASSEMBLY

RUBBER PRODUCTS



MACHINE MOUNT



CONVEYOR BELT



RUBBER ROLLER



V BELT



TIMING BELT



POLY V BELT



O RING



TYRE



SPIDER

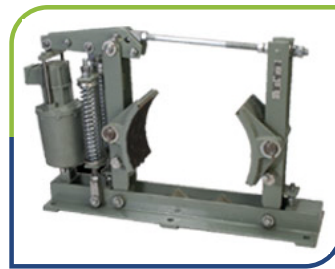
CRANE SPARES



CRANE WHEEL ASSEMBLY



DRUM COUPLING

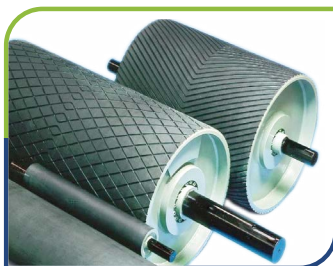


THRUSTER BRAKE

ROLLING AND CONVEYOR SPARES



ROLL/RETURN ROLLER



HEAD PULLEY / TAIL PULLEY



IMPACT ROLLER

MASTA



PLUMMER BLOCK



BEARING SLEEVES



LOCATING RING

FABRICATION & EQUIPMENT



ROTARY AIRLOCK VALVE

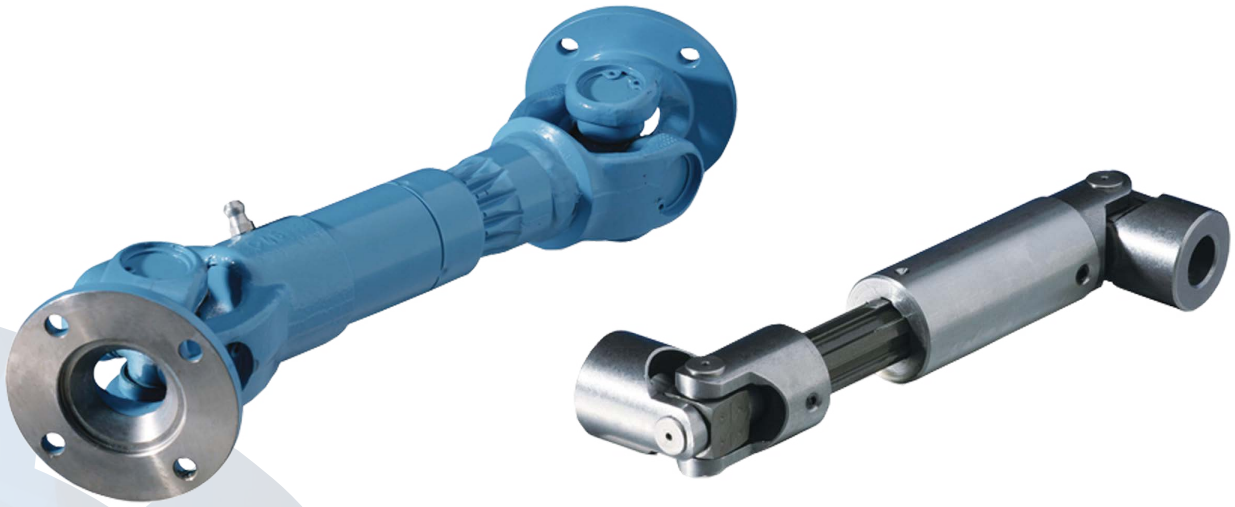


AIR JET MILL

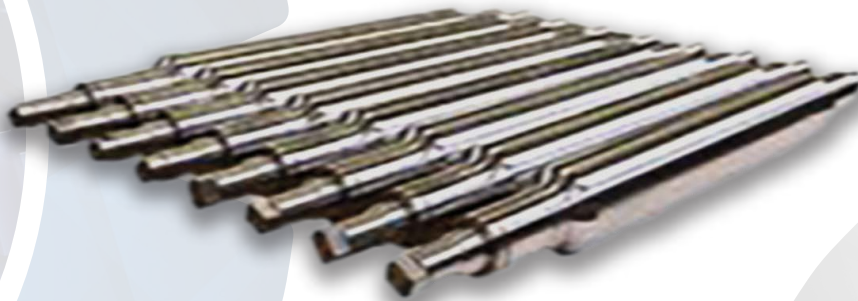


SCREW

CARDAN SHAFT & JOINT



WORK ROLL / INTERMEDIATE ROLL / BACKUP ROLL



GLOBAL PRESENCE



OUR CLIENTS



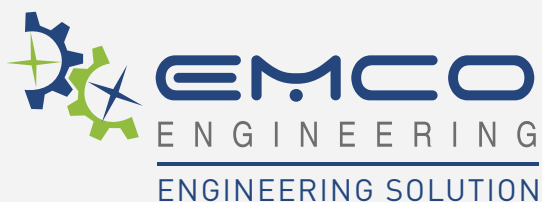
**AM/NS
INDIA**



JINDAL
STEEL & POWER




Reliance
Industries Limited



+91 22 4243 3385 / 88
+91 74000 53749 / 99207 76314
info@emcoengineering.com
www.emcoengineering.com

 **Head Office :**
304, 3rd Floor,
Western Edge -1,
Western Express Highway,
Borivali (East),
Mumbai - 400066,
Maharashtra, India.

Authorised
Masta[®]
PRECISION HOUSINGS

Fenner

DIAMOND[®]
INDIA RELIABILITY

FAG